



2006 SURVEY OF LOCAL ASSISTANCE  
FOR CHILD PROTECTIVE SERVICES

TEXAS COUNCIL  
OF CHILD WELFARE BOARDS

**Texas Council of Child Welfare Boards  
Local Assistance for Child Protective Services  
Summary of 2006 Survey Results**

The 2006 Survey of Local Assistance for Child Protective Services reflects a tremendous amount of local support for the child protective services program. The following results indicate that communities throughout the state consider protecting vulnerable children from abuse and neglect to be a local priority and are willing to supplement state and federal funding in this area.

- ❑ 63 survey responses were received from the 212 counties with child welfare boards.
- ❑ The responses indicated that \$22.9 million was spent in the reporting counties on local assistance for child protective services.
- ❑ Harris (\$16.5 million), Dallas (\$2.2 million), and Tarrant (\$1.5 million), counties accounted for approximately 88% of the reported expenditures.
- ❑ \$277,919 was generated from child welfare board fundraising activities.
- ❑ Local funding for staffing represented approximately \$14.9 million of the reported expenditures.
- ❑ Local spending for other staff support services (training, travel, office and storage space, equipment, and security) represented approximately \$4.6 million.
- ❑ Spending for the needs of children and families represented \$3.3 million.
- ❑ Clothing was largest category of spending for the needs of children at \$1.8 (57%).
- ❑ Expenditures for medical care totaled \$405,339 (12%).
- ❑ \$247,615 (7%) was spent on substitute care and kinship care.
- ❑ In-kind donations of over \$1 million were reported.
- ❑ The survey reflects that 1,286 volunteers donated 6,735 hours per month of their time for the survey period.

**Texas Council of Child Welfare Boards  
Local Assistance for Child Protective Services  
Local Funding Amounts by County  
2006 Survey Results**

1	Briscoe	3,124	5	Hardin	20,414
1	Childress	2,394	5	San Jacinto	15,399
1	Cochran	405			
1	Dickens	2,800			
1	Hale	41,600	6	Brazoria	248,704
1	Hutchinson	9,019	6	Chambers	16,337
1	Lubbock	127,839	6	Colorado	16,797
1	Swisher	4,500	6	Fort Bend	257,098
			6	Galveston	321,264
			6	Harris	16,521,870
2	Baylor	6,026	6	Liberty	65,539
2	Brown	8,580	6	Montgomery	89,798
2	Clay	2,443	6	Walker	26,600
2	Eastland	5,628	6	Waller	2,272
2	Hardeman	900			
2	Kent	1,000			
2	Knox	1,100	7	Bell	41,857
2	Mitchell	2,500	7	Burnet	19,470
2	Montague	12,800	7	Hill	11,744
2	Wichita	75,683	7	Lampasas	28,830
2	Young	4,789	7	Lee	3,117
			7	Leon	11,743
			7	Milam	18,224
3	Dallas	2,235,845			
3	Denton	428,778	8	Atascosa	11,824
3	Ellis	31,559	8	Comal	31,363
3	Fannin	12,994	8	Gillespie	10,361
3	Hunt	26,254	8	Kendall	5,553
3	Tarrant	1,526,676	8	Uvalde	4,475
4	Cherokee	22,040			
4	Harrison	28,623	9	Dawson	8,700
4	Hopkins	21,648	9	Ector	59,420
4	Lamar	84,540	9	Irion	5,243
4	Marion	7,200	9	Schleicher	3,200
4	Rains	1,875			
4	Rusk	38,538	10	Culberson	1,350
4	Van Zandt	4,000	10	El Paso	255,340

**Total Reported Local Assistance = \$22,917,620**

**63 responses out of 212 counties with child welfare boards**

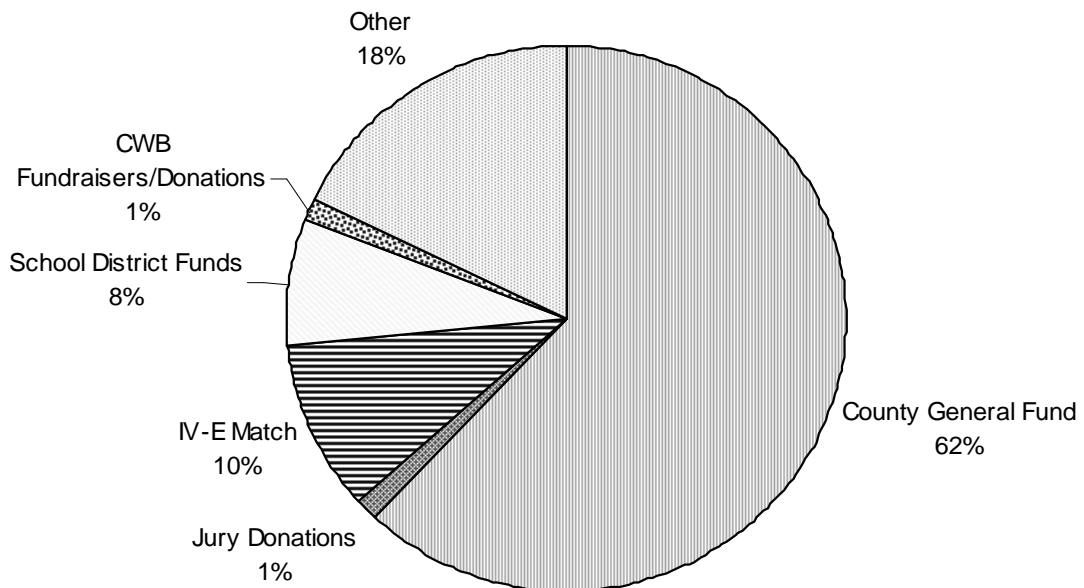
**Texas Council of Child Welfare Boards  
Local Assistance for Child Protective Services  
2006 Survey Results**

1	Sources of local funding with total expenditures per applicable source		
	County General Fund		14,213,473
	County Jury Donations		306,284
	County IV-E Match Revenue		2,267,445
	Municipal Funds		14,079
	School District Funds		1,767,849
	CWB Fundraisers/Donations		277,919
	501(c)(3) Funds Not Included Above		169,150
	Other Source		3,901,417
	<b>TOTAL EXPENDITURES</b>		<b>\$22,917,620</b>
2	Local funding provides approximately 300 full-time equivalents costing an estimated		<b>\$14,888,602</b>
	Employer	DFPS	99.5
		County	199.0
3	Local expenditures in other areas for staff support		
	Training		163,310
	Travel		343,445
	Office/Storage Space		1,517,605
	Office Equipment		430,849
	Security		139,039
	Other Support		1,971,095
	<b>TOTAL EXPENDITURES</b>		<b>\$4,565,288</b>
4	Local expenditures for needs of children and families serviced by CPS		
	Substitute Care		37,264
	Relative/Kinship Care		210,351
	Adoption Assistance		11,336
	Child Care		39,271
	Medical		405,339
	Therapeutic/Parenting Classes		11,219
	Clothing		1,825,660
	School Fees		49,879
	Extracurricular		11,655
	Camp Fees		52,224
	Gifts/Care Packages		243,484
	Travel		37,959
	Other		353,972
	<b>TOTAL EXPENDITURES</b>		<b>\$3,289,607</b>
5	In-kind value of donated goods/services		\$1,008.276
6	Community volunteers involved in the CPS program		
	Child Welfare Boards	639 volunteers	2,911 hours monthly
	Other Volunteers	647 volunteers	3,824 hours monthly

**63 responses out of 212 counties with child welfare boards**

**Texas Council of Child Welfare Boards  
Local Assistance for Child Protective Services  
2006 Survey Results**

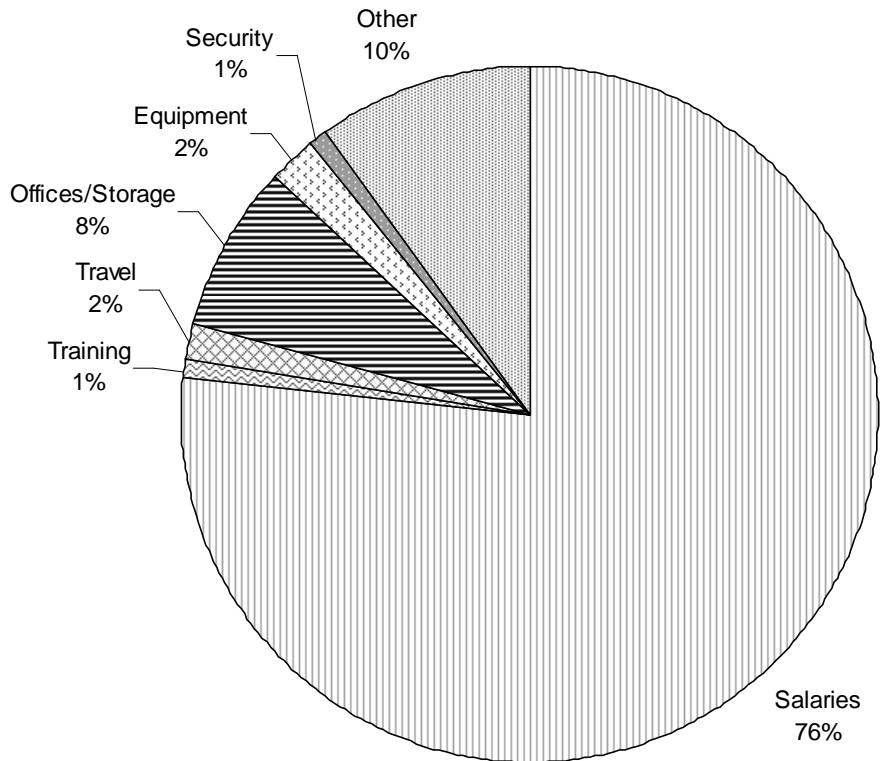
**Local Funding Sources**



Approximately \$22,917,620 from local funding sources was provided for child protective services in the 63 counties reporting. County general funds provided approximately \$14,213,473 of that total.

**Texas Council of Child Welfare Boards  
Local Assistance for Child Protective Services  
2006 Survey Results**

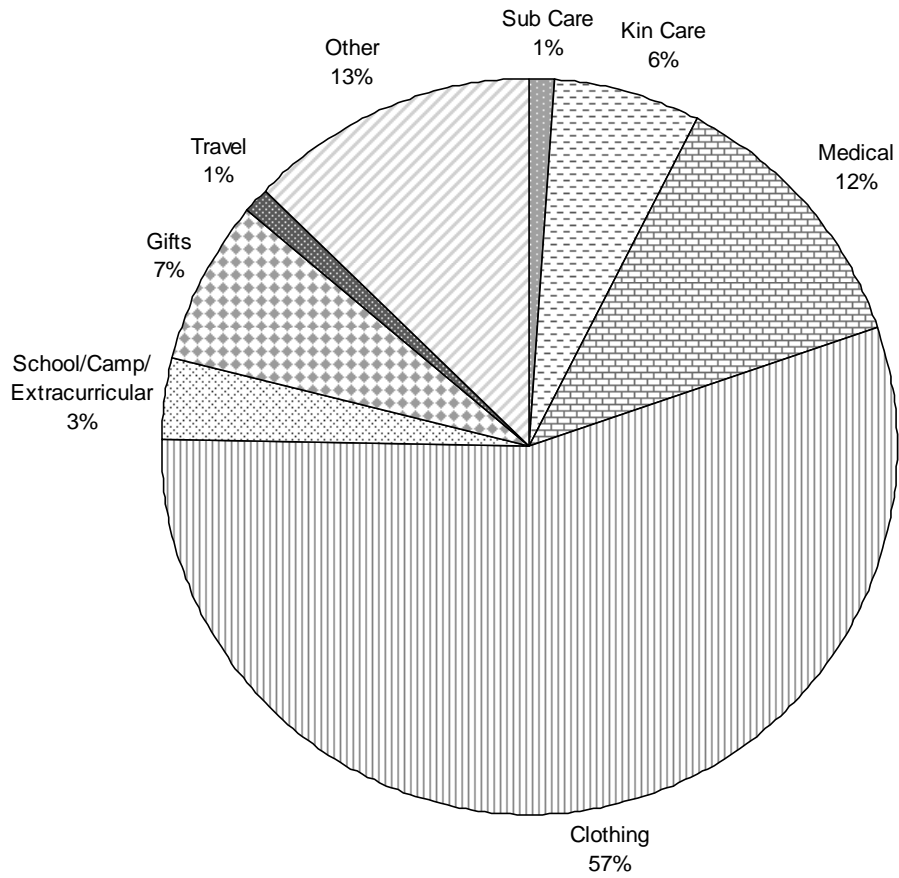
**Staffing and Staff Support Expenditures**



Approximately \$19,453,890 from local funding sources was provided for child protective services staffing and staff support services in the 63 counties reporting. Local funds provided approximately 300 full-time equivalent staff.

**Texas Council of Child Welfare Boards  
Local Assistance for Child Protective Services  
2006 Survey Results**

**Expenditures for Needs of Children and Families**



Approximately \$3,289,607 from local funding sources was provided for needs of children and families receiving child protective services in the 63 counties reporting. An additional \$1,008,276 in in-kind donations was received.