



**TEXAS**  
Department of Family  
and Protective Services

# Community-Based Care

---

**Texas Council of Child Welfare  
Boards Conference**

**Hollie Mims, CBC Operations**

# Agenda

Community-Based Care (CBC) Goals and Background

Single Source Continuum Contractors (SSCCs):

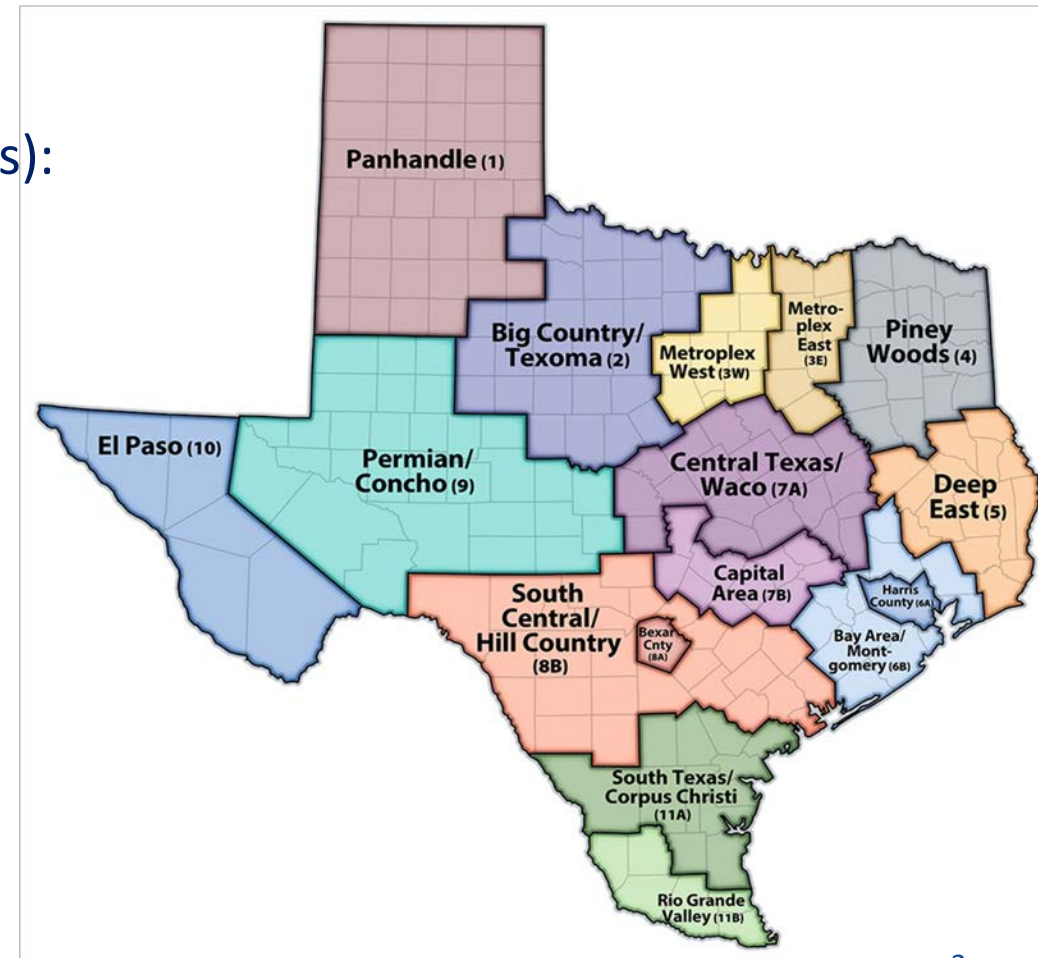
- *Contracting Process and DFPS Oversight*

CBC Implementation:

- *Current Status and Future Plans*

Tips for CWBs

Q&A



# What is Community-Based Care (CBC)?

---

CBC is Texas' model of providing foster care services, which gives **local communities** the flexibility to draw on **local strengths** and **resources** and find **innovative** ways to meet the unique and individual needs of children and their families.

CBC includes many of the services that Child Protective Services (CPS) provided in the DFPS legacy system including foster care, case management, kinship, and reunification services.

# What are the Goals of CBC?

---

- Increase the number of children and youth placed with their siblings and in their home communities;
- Increase the number of children and youth who remain in their school of origin;
- Decrease the average time children and youth spend in foster care before achieving positive permanency;
- Decrease the number of moves children and youth experience while in foster care;
- Decrease the duration and intensity of services that children and youth need while in foster care due to improved well-being and behavioral functioning; and
- Create robust and sustainable service continuums in communities throughout Texas.

# Legal Basis for CBC

---

- It is the intent of the Texas legislature for DFPS to contract with community providers of child welfare services, including direct case management; Tex. Fam. Code §264.151 and §264.158.
- Single Source Continuum Contractors (SSCCs) assume all of the statutory duties of DFPS per Tex. Fam. Code §264.161.
- Legal representation in child protection cases is provided in the same manner as DFPS, Tex. Fam. Code §264.163, i.e. represented by the county attorney, district attorney, criminal district attorney, or attorney general per Tex. Fam. Code §264.009.

# Community-Based Care Background

---

## Public Private Partnership

Formed in 2010, tasked with creating the model for Foster Care Redesign

## Foster Care Redesign

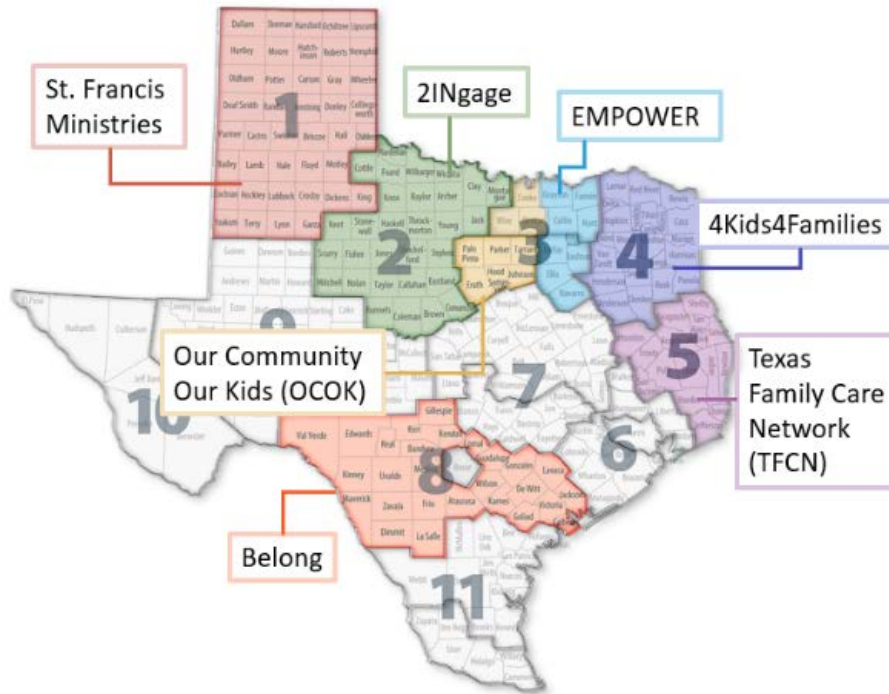
In 2011, Senate Bill 218 codified the PPP's recommendations and allowed the department to move forward with implementation of the Foster Care Redesign (FCR) model.

## Community-Based Care

In 2017, Senate Bill 11, 85th Texas Legislature built off the foundation of the FCR model, to further advance the system through the establishment of CBC. CBC added the case management responsibility to the SSCC contract.



# What is a Single Source Continuum Contractor (SSCC)?



- A single contractor in each designated geographic area (community area) creates a network of services, foster homes, and other living arrangements and, when ready, provides case management for each child as well.
- CPS works with each contractor (SSCC) to carefully manage the transition from traditional foster care to community-based care.

# SSCC Applications

---

## Request for Application (RFA) Process

- Posted at least once or twice per biennium (2 years)
- Community areas follow DFPS regional boundaries

## Unsolicited Proposal Process

- Proposals to contract for community areas outside of a posted RFA are allowed per Texas Family Code [§264.157\(b\)](#)
- Posted on the [HHSC webpage](#)
- Communities select their area (contiguous counties, keep county boundaries, and encouraged to keep judicial boundaries)
- Only in areas not currently under an SSCC

## Applicant Requirement

- Applicant must be either a non-profit with majority of the board residing in Texas or a governmental entity



# CBC Contract Information

---

## Performance Measures (Performance-Based Contract)

- a. Contract performance measures tie back to child safety, permanency, and wellbeing.
- b. Additional performance measures (for Stage II) include % of children and youth that attend school in their school of origin and the percentage of children/youth that are placed with kin.
- c. Stage III, financial incentives and remedies tied directly to time child spends in paid foster care before exiting to reunification, kinship, or adoptive placement.

## Monitoring and Oversight

- a. Multi-Disciplinary Team approach to monitoring:
  - CBC Contract manager is responsible for ensuring contract adherence, fiscal monitoring, and oversight of contractor performance in collaboration with the multi-disciplinary team.
  - Regional CBC Administrator (CBCA), oversees implementation in each area and tracks case specific issues to resolutions. Noted trends are elevated to contract manager to address.
  - DFPS Office of Data and Systems Improvement program supports Continuous Quality Improvement strategies in the community area, through monthly and quarterly data reviews with DFPS and SSCC.
  - Case Management Oversight (CMO) staff complete case reads in order to support case management oversight and provide technical assistance.

**SSCC contracts have a five-year term with an optional one-time five-year renewal.**

# SSCC Stage II Performance Measures

---

<b>Safety</b>	For children not to experience abuse, neglect, or exploitation while in foster care.
<b>Stability</b>	To minimize the number of placement moves in foster care.
<b>Home Settings</b>	For children to live in home settings.
<b>Proximity</b>	For children to live within 50 miles of their home.
<b>Sibling Groups</b>	For sibling groups to be placed together.
<b>Preparation for Adult Living</b>	For youth who will age out of care to be prepared for adult living.
<b>Kinship</b>	For children to be placed with kin.
<b>Texas ID / DL</b>	Youth 16 and older access to a State ID / Driver's License
<b>Permanency/Reunification</b>	Reduce children's time in care.
<b>Re-Intervention</b>	Reduce future CPS intervention for children who exit care.

# CBC Stages

## Stage I

- Foster Care Network Development
- Placement Services
- Child & Adolescent Needs and Strengths (CANS) Assessment
- Coordinated Child Plan of Service
- Adoption Purchased Services for Children & Youth
- Preparation for Adult Living (PAL) for youth in paid foster care
- Daycare Coordination

## Stage II

- All Stage I Duties
- Case Management Services
- Plan of Service for Children & Families
- Purchased Services to Support Reunification for Families
- Kinship Services
- Transitional Living Services – PAL for all Youth
- Interstate Compact on the Placement of Children
- Adoption and Post-Adoption Services
- Case Management Services

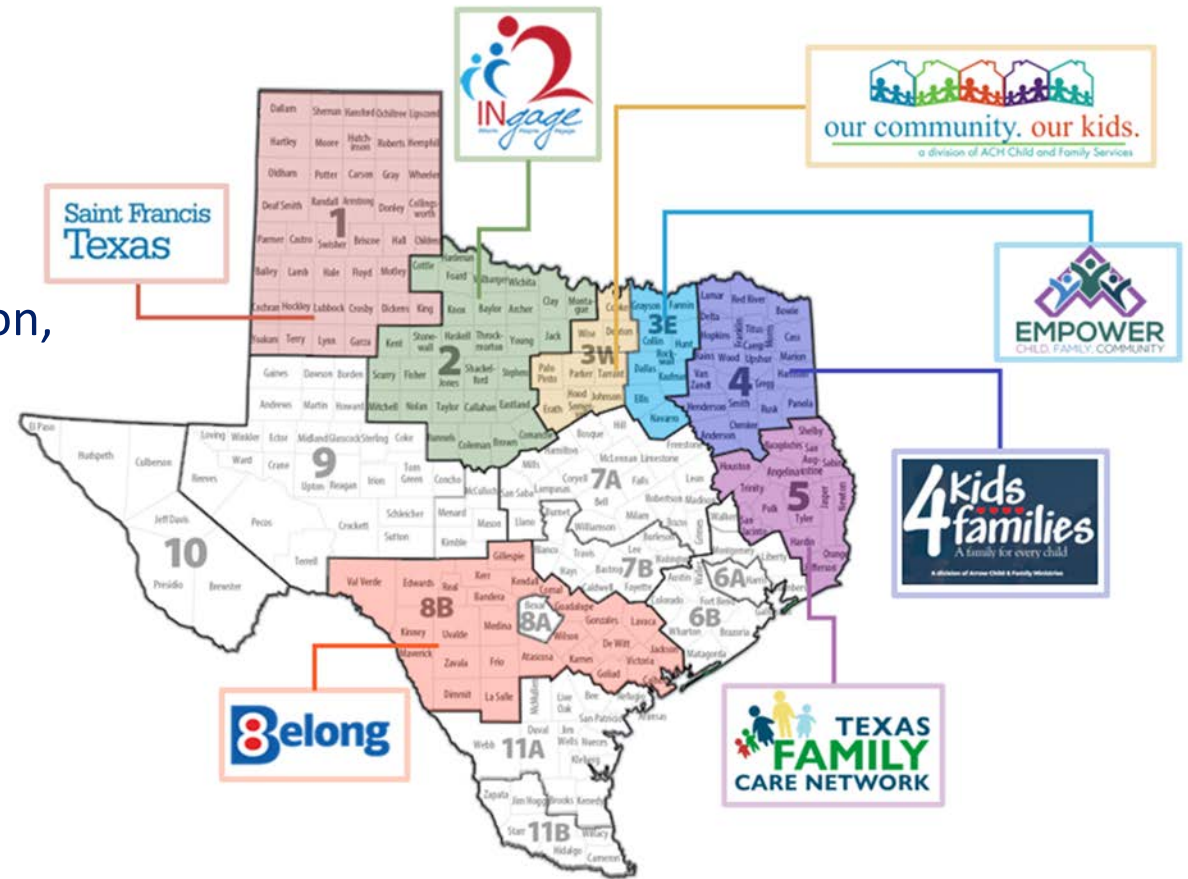
## Stage III

- All Stage I and Stage II Duties
- Assess performance at 18 months from implementation of Stage II for financial incentives & remedies, per statute
- *Note: Incentives distributed must be reinvested to improve the quality of care to youth.*



# CBC Implementation- February 2024

- R1- Saint Francis- Stage III
- R2- 2INgage- Stage III
- R3W- OCOK- Stage III (southern 7 counties), and Stage II (Cooke, Denton, and Wise)
- R3E- EMPOWER- Stage II
- R4- 4Kids4Families- Stage II
- R5- TFCN- Stage II
- R8B- Belong- Stage III



# CBC Future Implementation and Enhancements

## Current Procurement Activities:

RFA for 6A, 6B, 8A, (10) was released on March 1, 2024.

- Responses were received for Regions 6A, 6B, and 8A; however, no responses were received for Region 10.
- Negotiations with respondents are underway.

Interagency Contract (IAC) with University of Texas at Austin for CBC Process Evaluation to understand the strengths and challenges of implementing CBC in Regions 1, 2, 3W, and 8B

## Request for Information (RFI) for R9 and R10

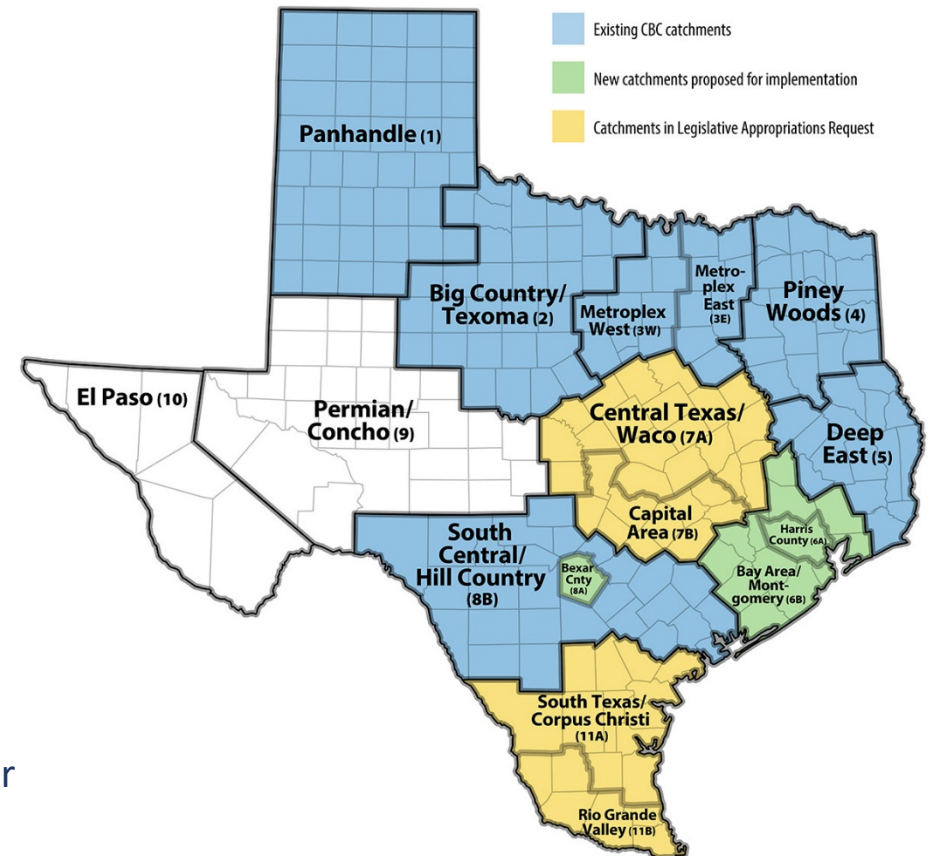
- Closed September 3, 2024. Provides crucial stakeholder feedback to inform the implementation of CBC in these rural regions.

## Future Procurement Plans:

- Legislative Appropriations Request includes funding request for Regions 7A, 7B, 11A, and 11B

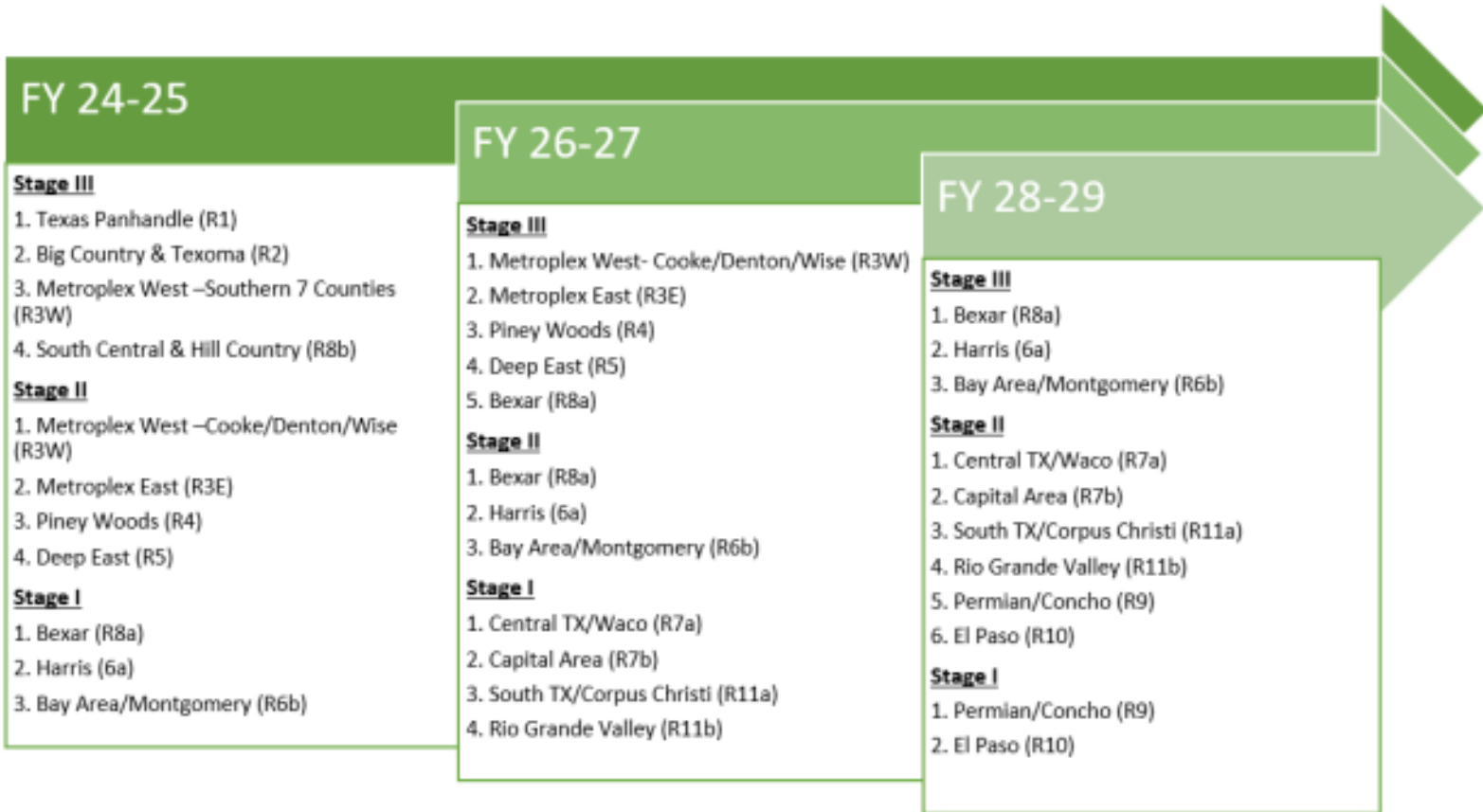
## Unsolicited Proposals for Region 7A:

- Three were received in Fall 2024. DFPS will move to a competitive procurement/RFA





# CBC Implementation Moving Forward





# Tips for Child Welfare Boards

---

## *Engage Early and Often with Your SSCC!*

- Keep an open line of communication with your SSCC, from the time that an SSCC is announced through each stage of implementation.
- Know that each SSCC's case practice model is different, but each have the same core goals of safety, permanency, and well-being for youth in care.
- Keep in touch with your local SSCC to problem solve and identify areas for improvement- keep the spirit of partnership.
- When in doubt, reach out and ask. DFPS is always here to support!



# Resources

---

- CBC [Webpage](#): Current events and reports, SSCC and DFPS contact information, request a presentation ([www.communitybasedcare.org](http://www.communitybasedcare.org))
- CBC Concerns or Complaints: [CBCComplaints@dfps.texas.gov](mailto:CBCComplaints@dfps.texas.gov)
- General CBC Inquiries: [CBCare@dfps.Texas.gov](mailto:CBCare@dfps.Texas.gov)





**TEXAS**  
Department of Family  
and Protective Services

# Thank You

---

**Community-Based Care Operations**

**Hollie Mims**

**[Hollie.Mims@dfps.Texas.gov](mailto:Hollie.Mims@dfps.Texas.gov)**

**512-239-9657**